

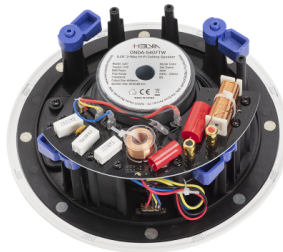
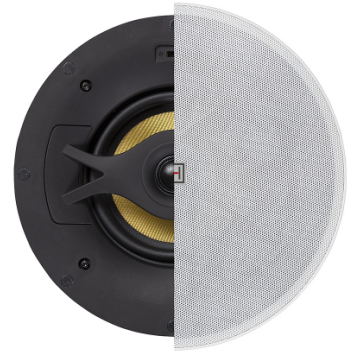
ONDA-540TFW

5.25" 2-Way Hi-Fi Low-Impedance Coaxial In-Wall/In-Ceiling Speaker

ONDA in-wall speaker series is born to satisfy all those indoor installations where sound pressure and quality higher than normal 70/100V systems are requested.

The ONDA speakers are all low-impedance (8ohm), coaxial, with Kevlar woofers, silk-dome tweeters, precision crossovers; essentially true 2-way speakers for professional applications, but ceiling/wall mount.

The look of the front panel is minimalist and captivating, and reminds recording studio monitor. The frame-less design, with black ABS frame and white magnetic grids, makes the ONDA speakers extremely discreet. Finally, the grids can be repainted to make them even less visible.



PRODUCT DETAILS

Key features

2-Way Hi-Fi Coaxial Low-Impedance Loudspeaker

Frame-less Design with Magnetic Grille

Quick-Fit Mounting System with 4 Screws

40W RMS Power

High Excursion Kevlar Woven Cone Woofers

5.25" (135mm) Woofer Diameter

0.76" Silk-Dome Tweeter

Built-In Precision Passive Crossover

+/-2dB High-Frequency Attenuation Selector

Specifications

Speaker Type	2-Way Passive, Coaxial
Frequency Response (-10dB)	65Hz-20kHz
Sensitivity (1W @ 1m)	91dB
RMS Power	40W
Impedance	8 ohm
Woofers	5.25" (135mm), Kevlar Woven Cone
Tweeter	0.76" (20mm), Silk Dome
High-Freq. Attenuator	2-position switch (0dB/-2dB)
Housing	ABS
IP rate (speaker installed)	IP54
Mounting	Quick mounting system with 4 screws
Grille	Frameless Design, Magnetic Mount, Perforated steel with acoustic transparent foam inside, paintable
Color	Black Housing / White Grille
Cutout Size	Ø 194 mm
Product Size (WxDxH)	Ø 232 x 88 mm
Speaker Weight	1,23 kg
Packing Size (WxDxH)	255 x 250 x 92 mm
Packing Weight	1,43 kg