

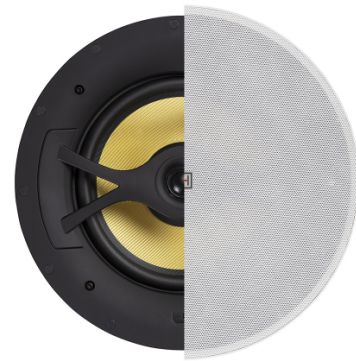
## ONDA-660TFW

### 6.5" 2-Way Hi-Fi Low-Impedance Coaxial In-Wall/In-Ceiling Speaker

ONDA in-wall speaker series is born to satisfy all those indoor installations where sound pressure and quality higher than normal 70/100V systems are requested.

The ONDA speakers are all low-impedance (8ohm), coaxial, with Kevlar woofers, silk-dome tweeters, precision crossovers; essentially true 2-way speakers for professional applications, but ceiling/wall mount.

The look of the front panel is minimalist and captivating, and reminds recording studio monitor. The frame-less design, with black ABS frame and white magnetic grids, makes the ONDA speakers extremely discreet. Finally, the grids can be repainted to make them even less visible.



## PRODUCT DETAILS

### Key features

2-Way Hi-Fi Coaxial Low-Impedance Loudspeaker

---

Frame-less Design with Magnetic Grille

---

Quick-Fit Mounting System with 4 Screws

---

60W RMS Power

---

High Excursion Kevlar Woven Cone Woofers

---

6.5" (165mm) Woofer Diameter

---

0.76" Silk-Dome Tweeter

---

Built-In Precision Passive Crossover

---

+/-2dB High-Frequency Attenuation Selector

---

## Specifications

<b>Speaker Type</b>	2-Way Passive, Coaxial
<b>Frequency Response (-10dB)</b>	60Hz-20kHz
<b>Sensitivity (1W @ 1m)</b>	93dB
<b>RMS Power</b>	60W
<b>Impedance</b>	8 ohm
<b>Woofers</b>	6.5" (165mm), Kevlar Woven Cone
<b>Tweeter</b>	0.76" (20mm), Silk Dome
<b>High-Freq. Attenuator</b>	2-position switch (0dB/-2dB)
<b>Housing</b>	ABS
<b>IP rate (speaker installed)</b>	IP54
<b>Mounting</b>	Quick mounting system with 4 screws
<b>Grille</b>	Frameless Design, Magnetic Mount, Perforated steel with acoustic transparent foam inside, paintable
<b>Color</b>	Black Housing / White Grille
<b>Cutout Size</b>	Ø 208 mm
<b>Product Size (WxDxH)</b>	Ø 248 x 97 mm
<b>Speaker Weight</b>	1,6 kg
<b>Packing Size (WxDxH)</b>	270 x 270 x 98 mm
<b>Packing Weight</b>	1,9 kg